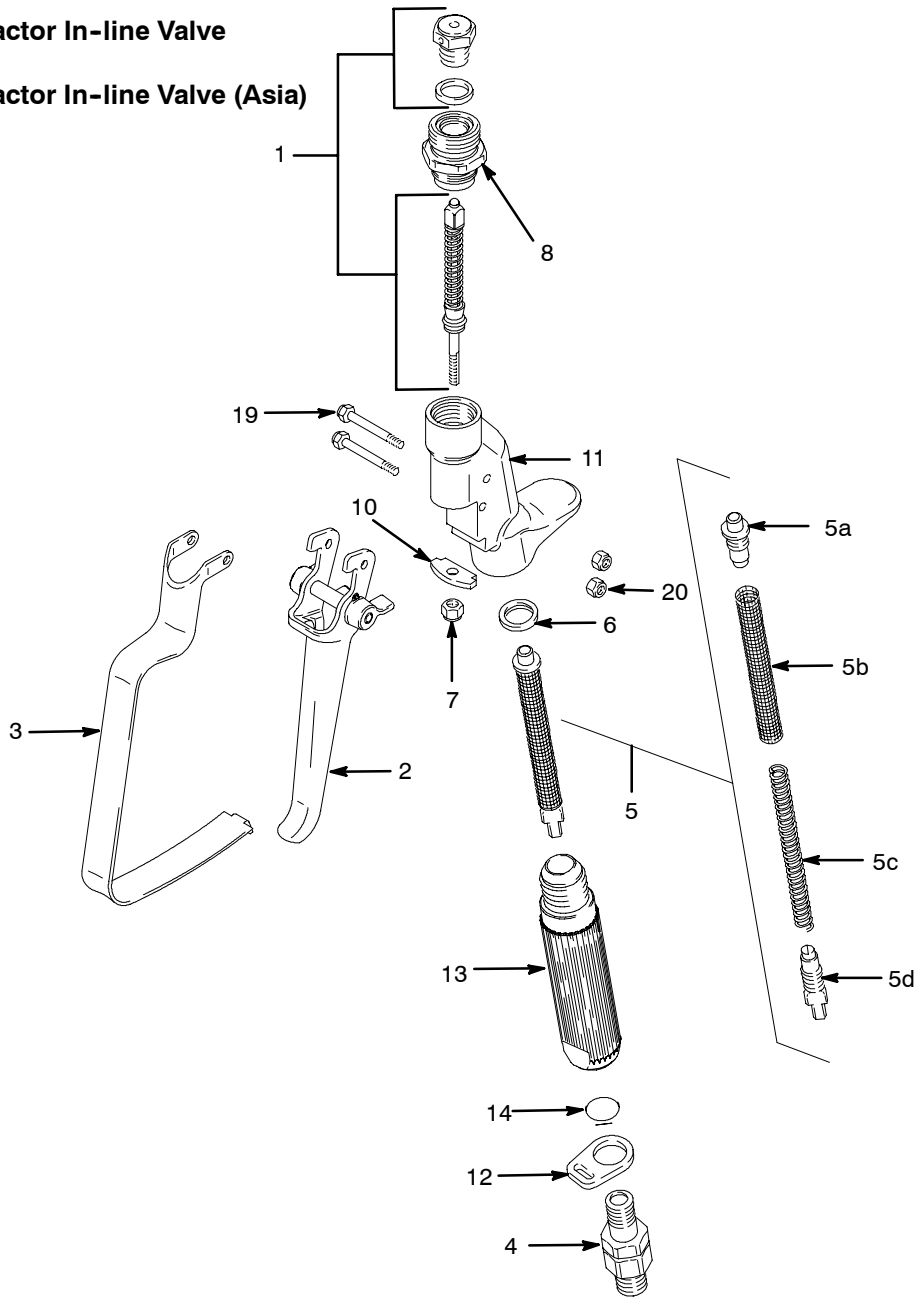


Parts

Model 244161 Contractor In-line Valve
(North America)

Model 244364 Contractor In-line Valve
(Europe)

Model 244365 Contractor In-line Valve (Asia)



TI0667

Parts List

Model 244161 Contractor In-line Valve (North America)

Model 244364 Contractor In-line Valve (Europe)

Model 244365 Contractor In-line Valve (Asia)

Ref. No.	Part No.	Description	Qty.	Ref. No.	Part No.	Description	Qty.
1	218070	NEEDLE-DIFFUSER/SEAT KIT	1	11	197568	HOUSING, fluid, locking (North America/Asia)	1
2	244193	TRIGGER, valve, in-line	1		196828	HOUSING, fluid (Europe)	1
3	196869	GUARD, trigger	1	12	113409	RETAINER, guard	1
4	238817	KIT, swivel	1	13	195788	HANDLE, valve (North America/Europe)	1
5✓	218131	FLUID FILTER ASSEMBLY (standard 50 mesh) includes replacement parts 5a, 5b, 5c, 5d	1		243393	HANDLE, valve (Asia)	1
5a	179722	RETAINER, spring	1	14	104938	PACKING, o-ring	1
5b	179731	ELEMENT, strainer	1	19	177538	STUD, trigger	2
5c	179763	SPRING, compression	1	20	105334	NUT, lock, hex	2
5d	179750	RETAINER, spring	1	21▲	222385	WARNING CARD (not shown)	1
6✓	179733	SEAL, sleeve	1	23▲	187348	COVER, warning	1
7	107110	LOCKNUT	1	▲ Replacement Danger and Warning labels, tags and cards are available at no cost.			
8	197052	ADAPTER, RAC	1	✓ Keep these spare parts on hand to reduce down time.			
10	197058	BRACKET, stem	1	● Part number provided for reference only. Not available as a replace- ment part.			