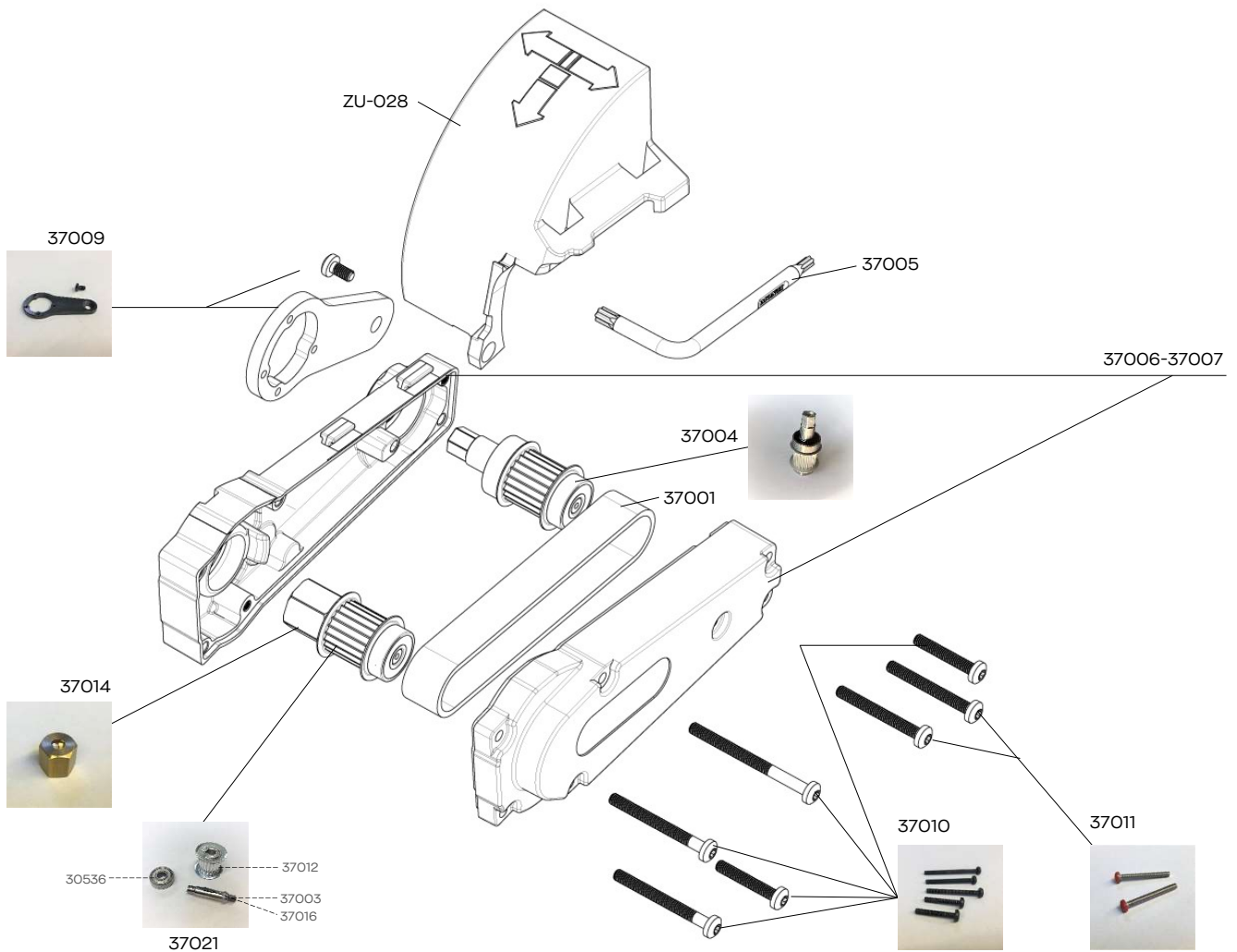


BRISTLE BLASTER® ELECTRIC DOUBLE (900 W)

GEAR BOX: EXPLODED VIEW AND SPARE PART LIST



Art.-Nr. Item Code	DE / Bezeichnung	EN / Description
ZU-028	Schutzhaube breit	Protection Cover, wide
37001	Hochleistungs-Zahnriemen	High-performance tooth belt
37009	Arm für Beschleunigungsstab, Stahl, schwarz	Arm for Accelerator Bar, Steel, black
37005	Torx Schlüssel	Torx wrench
37006-37007	Getriebe-Gehäuse Set	Gearbox housing set
37004	Abtriebswelle, montiert	Output shaft set, mounted
37014	Überwurfmutter	Sleeve nut
37021	Antriebswelle Montageset	Input shaft assembly set
37010	Schrauben Set (schwarz)	Screw set (black)
37011	Schrauben Set (rot)	Screw set (red)

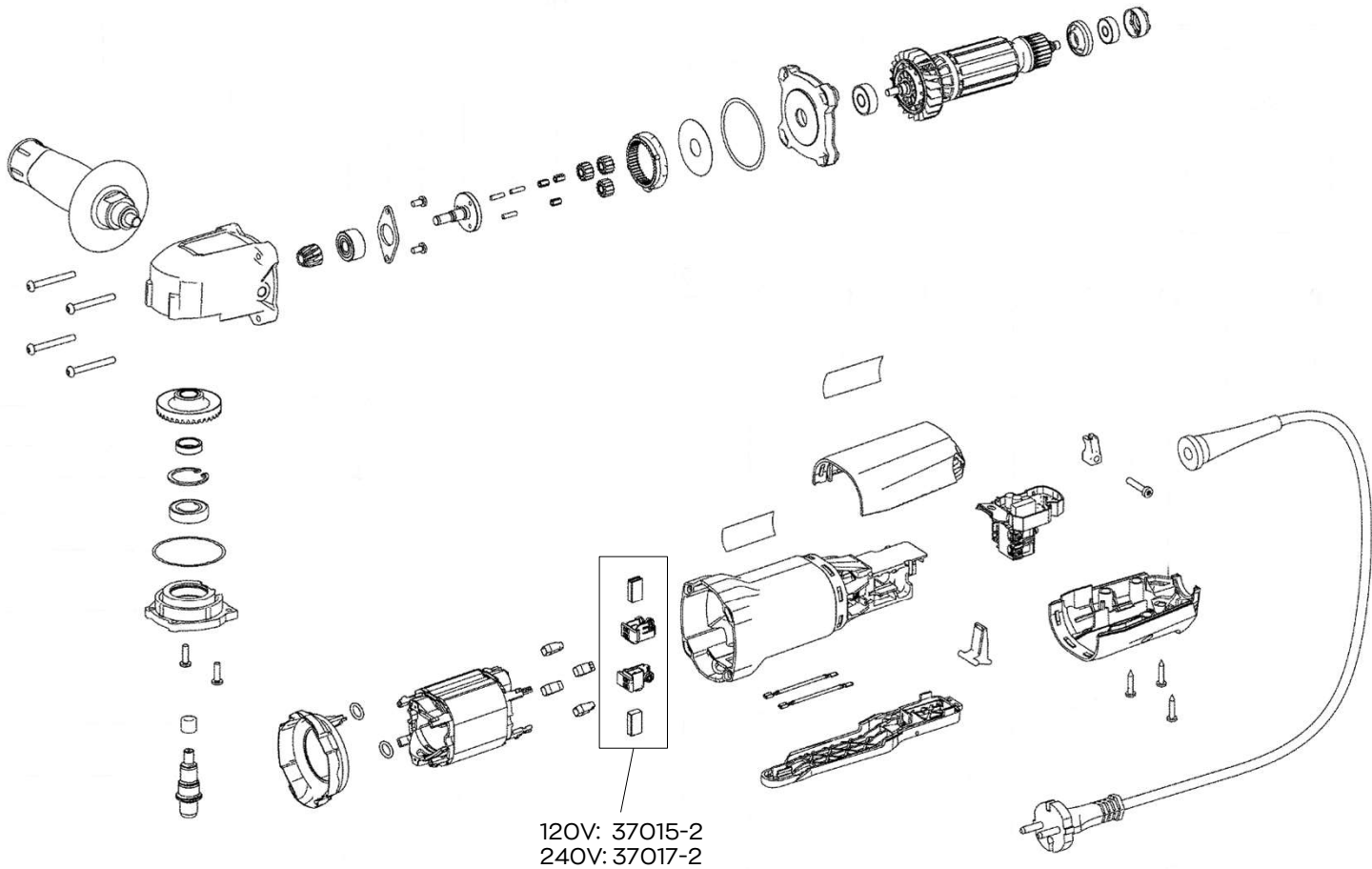
MontiPower | Part of Monti Group
 MONTI - Werkzeuge GmbH
 Reisertstr. 21
 53773 Hennef | Germany
 T +49 2242 9090 630
 info@montipower.com

MontiPower Americas
 7677 Coppermine Drive
 Manassas VA 20109
 T +1 703 396 8777
 www.montipower.com



BRISTLE BLASTER® ELECTRIC DOUBLE (900 W)

MOTOR: EXPLODED VIEW AND SPARE PART LIST



Art.-Nr. Item Code	DE / Bezeichnung	EN / Description
37015-2	Kohlebürsten/-halter für 120V, schwarz, Paar	Carbon brushes / carbon brush holder for 120V, black, pair
37017-2	Kohlebürsten/-halter für 240V, weiß, Paar	Carbon brushes / carbon brush holder for 240V, white, pair

MontiPower | Part of Monti Group
 MONTI - Werkzeuge GmbH
 Reisertstr. 21
 53773 Hennef | Germany
 T +49 2242 9090 630
 info@montipower.com

MontiPower Americas
 7677 Coppermine Drive
 Manassas VA 20109
 T +1 703 396 8777
 www.montipower.com

